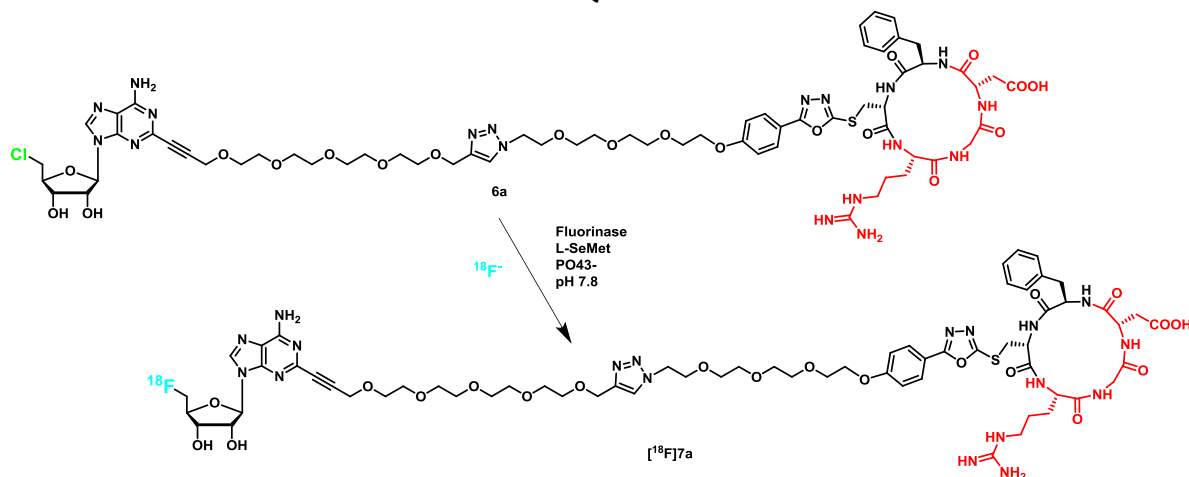


ZSJQZ006



Compound	Amount	
Fluorinase Freeze dried enzyme	5 mg	20 mg/mL final conc
L-Selenomethionine 2mM water	78 μL	
Precursor 6b 10 mM in DMSO	12 μL	
^{18}F in ^{18}O water solution	160 μL	240 MBq @15:24
Water		

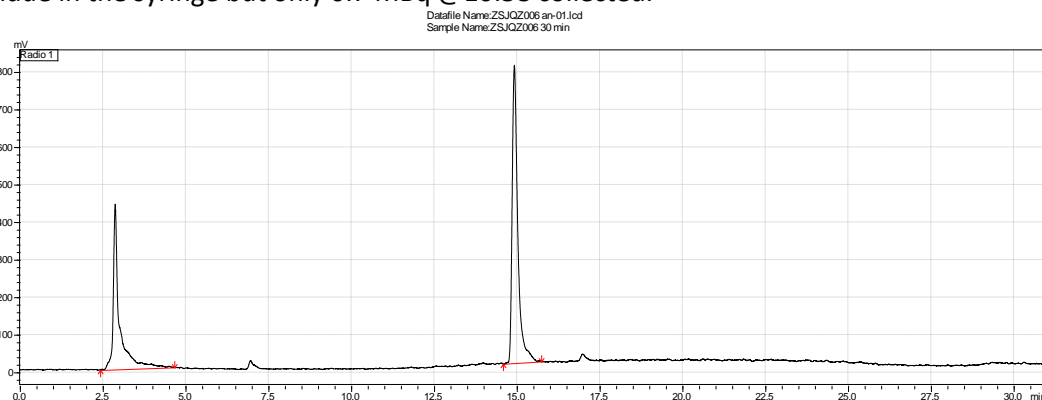
15:26 start incubation 37°C (239 MBq)

11:41 reaction mixture was boiled at 95°C for 5 min. After that the eppendorf was spinned at 13500 rpm for 5 min.

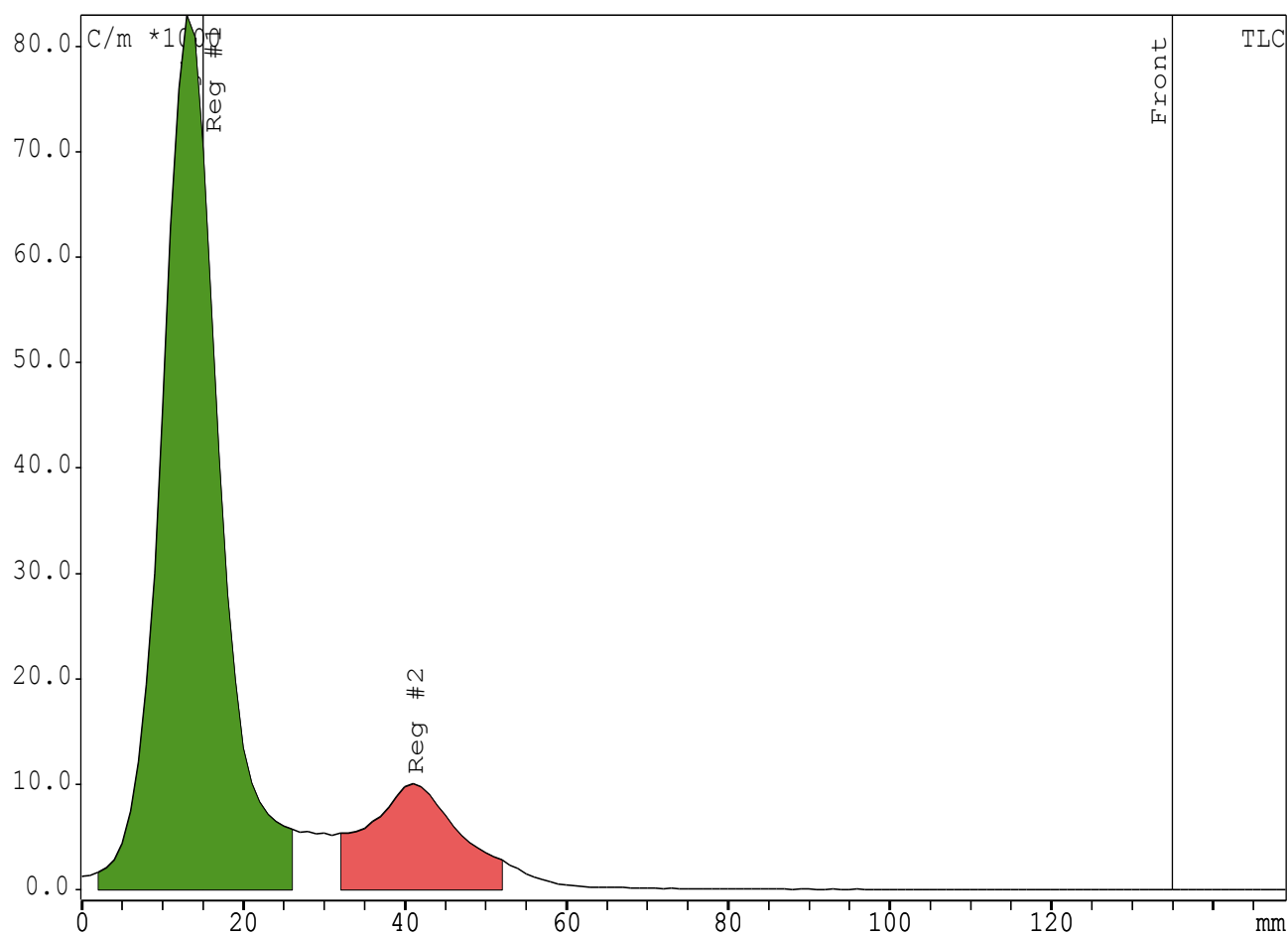
Final activity 100 MBq @16:15

No clear precipitation of protein (gel like)

20 μL (8.3 MBq @ 16:20) were loaded in the HPLC syringe and injected in analytical HPLC, 0.5 MBq @16:21 residue in the syringe but only 0.7 MBq @16:38 collected.



Radio TLC doesn't show any sign of product (maybe elution problem)



Integration TLC

"Substance"	R/F	%Total	"Type"	Area	%Area
""	%	""	C/m*mm	""	%
"Reg #1"	-0.017	79.05	"DD"	695152.0	84.05
"Reg #2"	0.217	15.00	"DD"	131900.0	15.95
""	""	""	""	""	""
"Sum in ROI"				827052.0	
"Total area"				879404.0	
"Area RF"				448008.0	